

We know what works

EIMCO 913 LHD Rebuild

Specialised Equipment Rebuilds

When a leading mining company required a complete rebuild on an EIMCO 913 LHD underground mining machine, it was AB Industries' multi-disciplined knowledge and attention to detail that was relied on. The CAT engine and Clark drivetrain were rebuilt to Premium Rebuild specification and the hydraulic system, transmission, frame, and axles were completely overhauled. The completed EIMCO 913 underwent rigorous inspection and test procedures, and as with all our projects a complete final report was provided.

LOADER END FRAME

- Repaired major cracks in pivot pin area.
- Repaired steering ram pin bores and made to suit longer up rated pins.
- New plate on lower main lift ram pin was welded in with new bushings.



(Before)

LIFT ARM

- Welded and repaired crack in pivot area on large bushing.
- Modified and manufactured new stop to suit the QDS unit.



(Before)

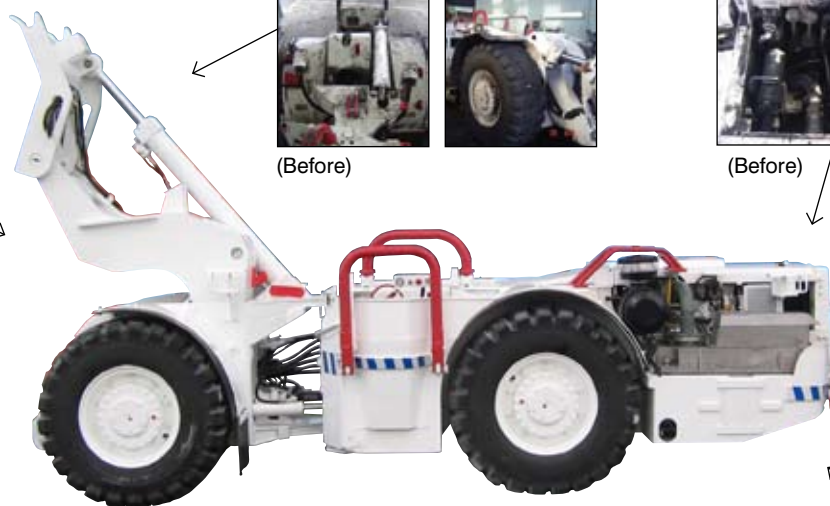


ENGINE OVERHAUL

- Complete engine and transmission overhaul to our Premium Rebuild specifications



(Before)



HYDRAULIC SYSTEM

- Repair and replace all clevis pin units.
- New hoses fitted in accordance with documented standards.
- New grease lines and safety lines fitted.
- Fitted new accumulators.



(Before)



REAR FRAME ASSEMBLY

- Welded on higher guard over and around hydraulic tank.
- Welded on two new tow loops.
- Fitted new scrubber frame assembly, welded on solid.
- Cut and modified holes in rear guard area for access to hydraulic pumps and made plates to cover.



(Before)



(During)

For a full report or to discuss your requirements contact Trevor Bowmar on our Free phone: **0800 121 800** or Email: trevor.b@abindustries.co.nz

For our corporate profile or information regarding our other services Email: sales@abindustries.co.nz Web: www.abindustries.co.nz

extending asset life 

AB Industries

5-17 Worker Road • PO Box 64, Wellsford 0940 • New Zealand
Phone: +64 9 423 8918 • Facsimile: +64 9 423 7588